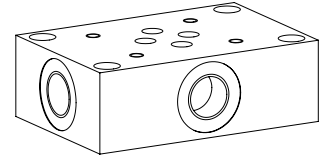


Threaded subplate

Installation in pipes

- ◆ $p_{max} = 350 \text{ bar}$
- ◆ Connections G3/8"

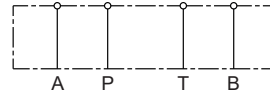
NG6
ISO 4401-03



DESCRIPTION

Threaded subplate with mounting interface for vertical stacking and threaded connection of the connections A, B, P, T.

SYMBOL



TYPE CODE

International standard interface ISO

Threaded subplate

Nominal size 6

Type list

Connections A, B, P, T on the side

S

Connections A, B, P, T at the bottom

U

Connections A, B, on the side and P, T at the bottom

SU

Design index (subject to change)

2.9-30

A G 6 #

GENERAL SPECIFICATIONS

Designation	Threaded subplate
Mounting	Installation in pipes
Nominal size	NG6 according to ISO 4401-03
Weight	1,0 kg (AG6S) 1,0 kg (AG6U) 1,4 kg (AG6SU)

INSTALLATION NOTES

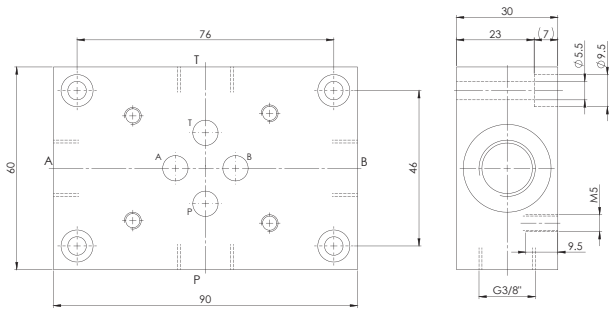
Mounting type	4 fixing holes for M5
Mounting position	Any
Threaded connections	G3/8" in A, B, P, T

SURFACE TREATMENT

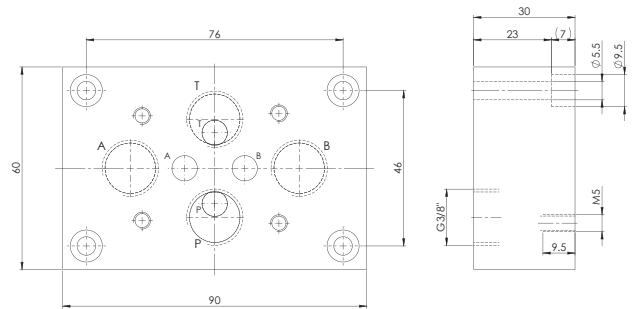
- ◆ The plates made of steel are zinc-nickel coated

DIMENSIONS

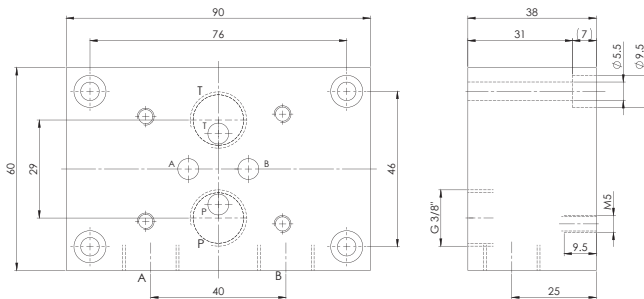
AG6S



AG6U



AG6SU



HYDRAULIC CONNECTION

