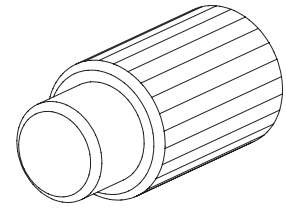


**Manual Overrides  
with spring reset  
or combined with spring return and detent**

**DESCRIPTION**

The manual overrides are screwed into the solenoid. Two types of overrides are available: one with spring reset and one with spring reset plus locking in the switched position. The housing is made of brass as standard. The pin is made of stainless steel.

**FUNCTION**

When commissioning a machine or if the power supply fails, the solenoid function can be replaced by operating the manual override. In the case of the type with lock, the solenoid can also be held in the end position.

**APPLICATION**

Both types of manual override can be screwed into solenoids with an M8x0,75 thread. With the manual override it is not possible to bleed air from valves. Note: Only restricted use for poppet valve.

**CONTENT**

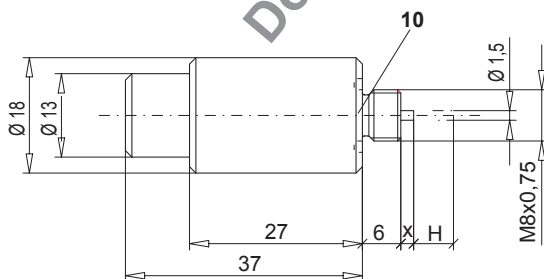
DIMENSIONS ..... 1

**TYPES**

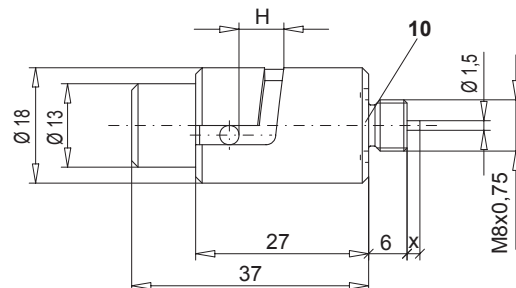
Solenoid type	Manual overrides			
	Spring reset		Detent	
	Des.	Art. no.	Des.	Art. no.
<b>Square 29-solenoids (NG3)</b>				
BSIII V	H1	253.9000	H6	253.9502
SIN29V	H1	253.9000	H22	253.9012
SIS29V	H1	253.9000	H22	253.9012
PI29V	H1	253.9000		
<b>Square 35-solenoids (NG4)</b>				
BEIIV	H1	253.9000	H22	253.9500
SIN35V	H1	253.9000	H6	253.9502
SIS35V	H1	253.9000	H6	253.9502
PI35V	H1	253.9000		
<b>Square 45-solenoids (NG6)</b>				
SIN45V	H1	253.9000	H19	253.9013
SIS45V	H1	253.9000	H19	253.9013
PI45V	H1	253.9000		
<b>Square 60-solenoids (NG10)</b>				
SIN60V	H21	253.9015	H20	253.9014
SIS60V	H21	253.9015	H20	253.9014
PI60V	H21	253.9015		

**DIMENSIONS**

Type with spring reset



Type with spring reset plus locking



Type	x	H	Type	x	H
H1	0	max.10	H19	0,3	10
H22	-2	10	H20	4	10
H6	-1	10	H21	4	max.10

**PARTS LIST**

Position	Article	Description
10	160.6076	O-ring ID 7,65x1,78