

# SLYPM22\_FG SOLENOID OPERATED POPPET VALVE CARTRIDGE EX-PROTECTION

## SOLENOID POPPET VALVE CARTRIDGE EXPLOSION PROTECTED

**Direct operated**      **SLYPM22\_FG, SLYPM22\_FG\_K9**

$Q_{\max}$                       10 l/min

$p_{\max}$                       350 bar

### DESCRIPTION

The solenoid poppet valve cartridge with the designation SLYPM22\_FG with very low actuating power is available in a stainless execution under the designation SLYPM22\_FG\_K9 and can therefore also be used in a highly corrosive environment.

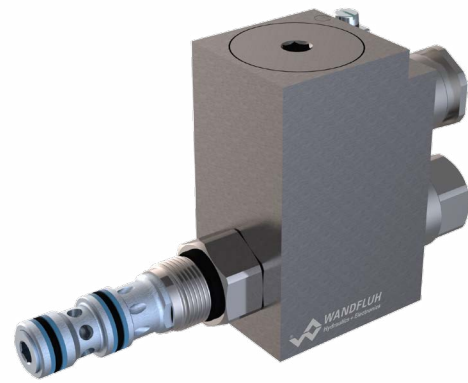
The valve can switch volume flows up to 10 l/min at up to 350 bar with an electrical power of only 6 Watt. With the option of integrated electronics, a 4 Watt holding power can be achieved. The valve is controlled by a solenoid certified for use in explosion-hazard areas.



Application example pipeline



Solenoid poppet valve cartridge SLYPM22\_FG (zinc-nickel coated)



Solenoid poppet valve cartridge stainless SLYPM22\_FG\_K9

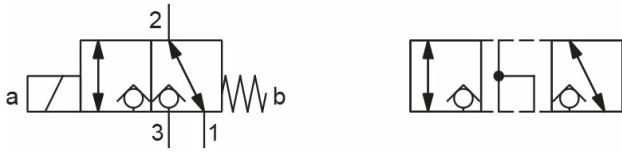
### FIELDS OF APPLICATION

These valves are suitable for applications in explosion-hazard areas, open cast and also in mines. The stainless execution is especially suitable for the use in wet and salty environment. Poppet valves are used where tight closing functions are essential like leakage-free load holding, clamping or gripping.



## SYMBOL

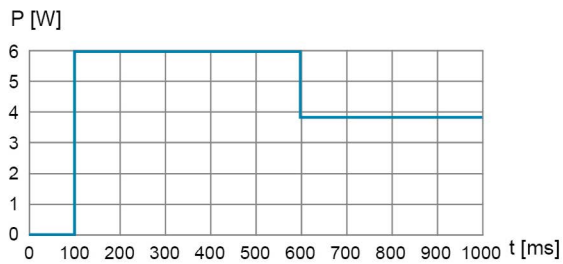
The valves are also available in a 3/2-way execution with transition function.



3/2-way version with transition function (symbol right)

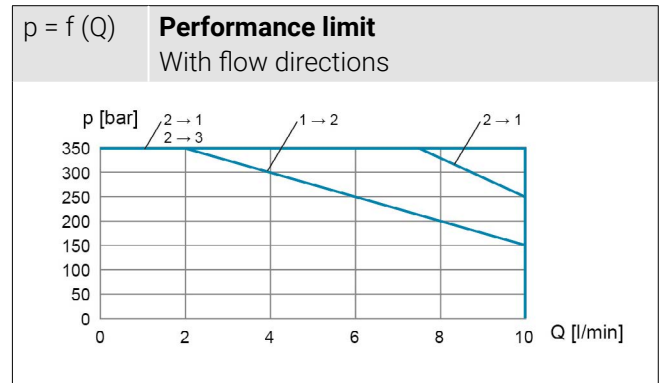
## SWITCH-ON BEHAVIOUR SOLENOID COIL

The solenoid coil switches on at a power of 6 watts. After 500 ms, when the relatively high pressures and flow rates have been switched (see characteristic), the coil regulates electronically to 4 watts (3.8 watts) and holds the switching position with about 65 % of the power in the end position (holding power).



Switching signal power reduction from 6 to 4 Watt

## ADJUSTMENT CHARACTERISTIC



Characteristics pressure (p) as a function of flow rate (Q)

## FEATURES

- Direct operated
- Low power (3.8 W)
- Explosion-protected
- Stainless executions
- Precise spool fit

