

STAINLESS SOLENOID OPERATED POPPET VALVE CARTRIDGE **SDSPM22_K9**

STAINLESS SOLENOID OPERATED POPPET VALVE CARTRIDGE

Direct operated	SDSPM22_K9
Q _{max}	40 l/min
Q _{N max}	40 l/min
p _{max}	350 bar

DESCRIPTION

Wandfluh has extended the solenoid actuated poppet valve cartridges with an execution for use in very corrosive environments. The external elements are made of stainless materials and are provided with high-quality surface protection.

The valve can switch volumes up to 40 l/min at up to 350 bar. In the closed position, the metallic sealing seat closes the valve practically leakage-free.

The universally applicable valve has the most common solenoid connections and voltages. It is optionally available with an integrated manual override.



Application example harbour crane



Solenoid operated poppet valve cartridge SDSPM22-AB-K9 or SDSPM22-BA-K9



Solenoid operated poppet valve cartridge SDSPM22-FG-K9

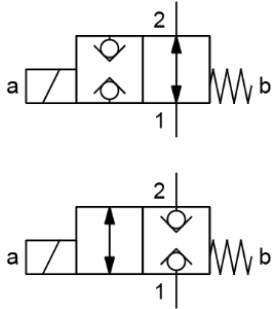
FIELDS OF APPLICATION

Solenoid operated poppet valve cartridges are used where tight closing functions are essential like leakage-free holding of loads and clamping or gripping. The stainless execution is especially suitable for the use in wet and salty environment.



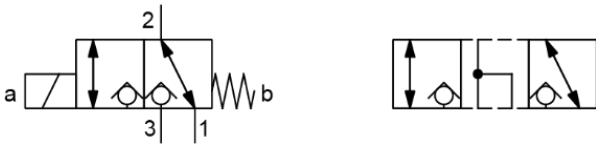
SYMBOLS

The valve is available in the 2/2-way executions AB (normally open) or BA (normally closed)



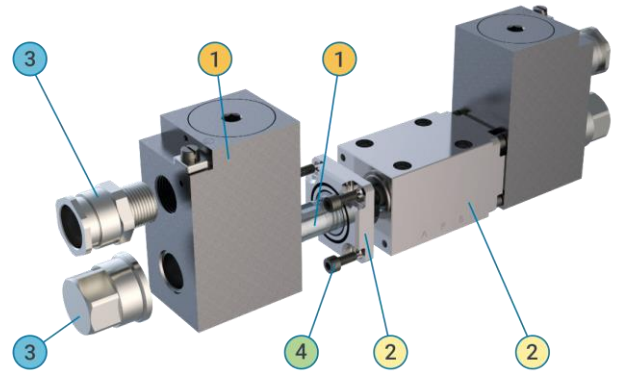
2/2-way executions SDSPM22-AB-K9 or SDSPM22-BA-K9

Optionally the valve is also available in a 3/2-way execution



3/2-way execution with transition function SDSPM22-FG-K9 (symbol right)

CORROSION PROTECTION K9



Pos	Corrosion protection
1	Zinc-nickel coated
2	Stainless steel AISI 316L
3	Nickel coated brass
4	Stainless steel screws

FEATURES

- Direct operated
- Seat tight
- Stainless
- Sensitive motion sequences
- Precise spool fit

